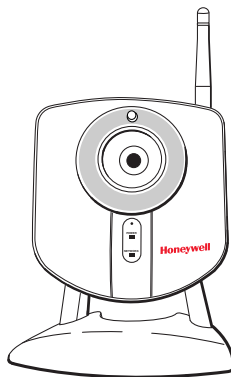
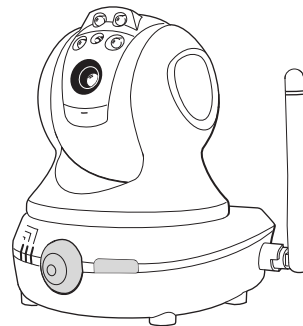


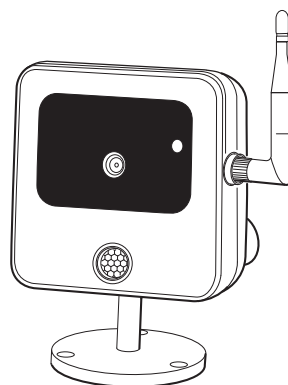
Total Connect Online Help Guide for: **iP Cameras**



iPCAM-WI Wireless Indoor



iPCAM-PT Pan and Tilt



iPCAM-WO Wireless Outdoor

TRADEMARKS



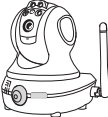
Honeywell is a registered trademark of Honeywell International Inc.

Flash is a registered trademark of Adobe Systems Incorporated, registered in the U.S. and other countries.

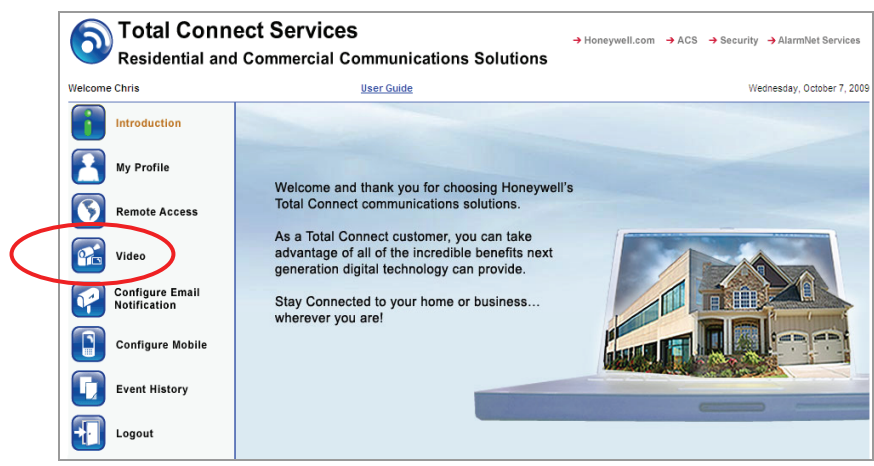
QuickTime® is a registered trademark of Apple Inc., registered in the U.S. and other countries.

All other trademarks are the properties of their respective owners.

This guide covers the operation of Honeywell's IP Cameras for use with the Total Connect website. The various cameras each have different features that can be controlled from the Total Connect website. **When a particular camera is selected, only the operating switches for that model camera will appear.** Refer to the topics at the end of this guide for details on the tool buttons and how to set your preferences for each camera. The table below highlights the features of each internet camera model:

Camera	Features
 iPCAM-WI Camera	<ul style="list-style-type: none"> • Wired or Wireless • Fixed Lens • Video Motion Detection
 iPCAM-WO Camera	<ul style="list-style-type: none"> • Wired or Wireless • Fixed Lens • Video Motion Detection • PIR Motion Detection • Outdoor use
 iPCAM-PT Camera	<ul style="list-style-type: none"> • Wired or Wireless • Fixed Lens • Video Motion Detection • PIR Motion Detection • Pan and Tilt with presets • Aux Lighting

1 After logging into Total Connect, click Video.



Note: After approximately 30-minutes of inactivity, the Video session will time out and disconnect.

2 From the drop-down menu, choose the video system you want to view. Click Launch Video System.



If your PC does not have QuickTime and Flash You will be prompted to install or update these applications.

- 3** On the right, thumbnail still pictures for each camera will appear. These thumbnails are updated every 10 to 20 seconds. You may select a camera to view live video by clicking on that camera. The live video appears on the left.



Set the default camera by checking this box.
If you set a default camera, its live video will automatically appear on the left the next time you launch the video system.

Firmware update notification. Refer to the "Updating the Camera Firmware" topic.

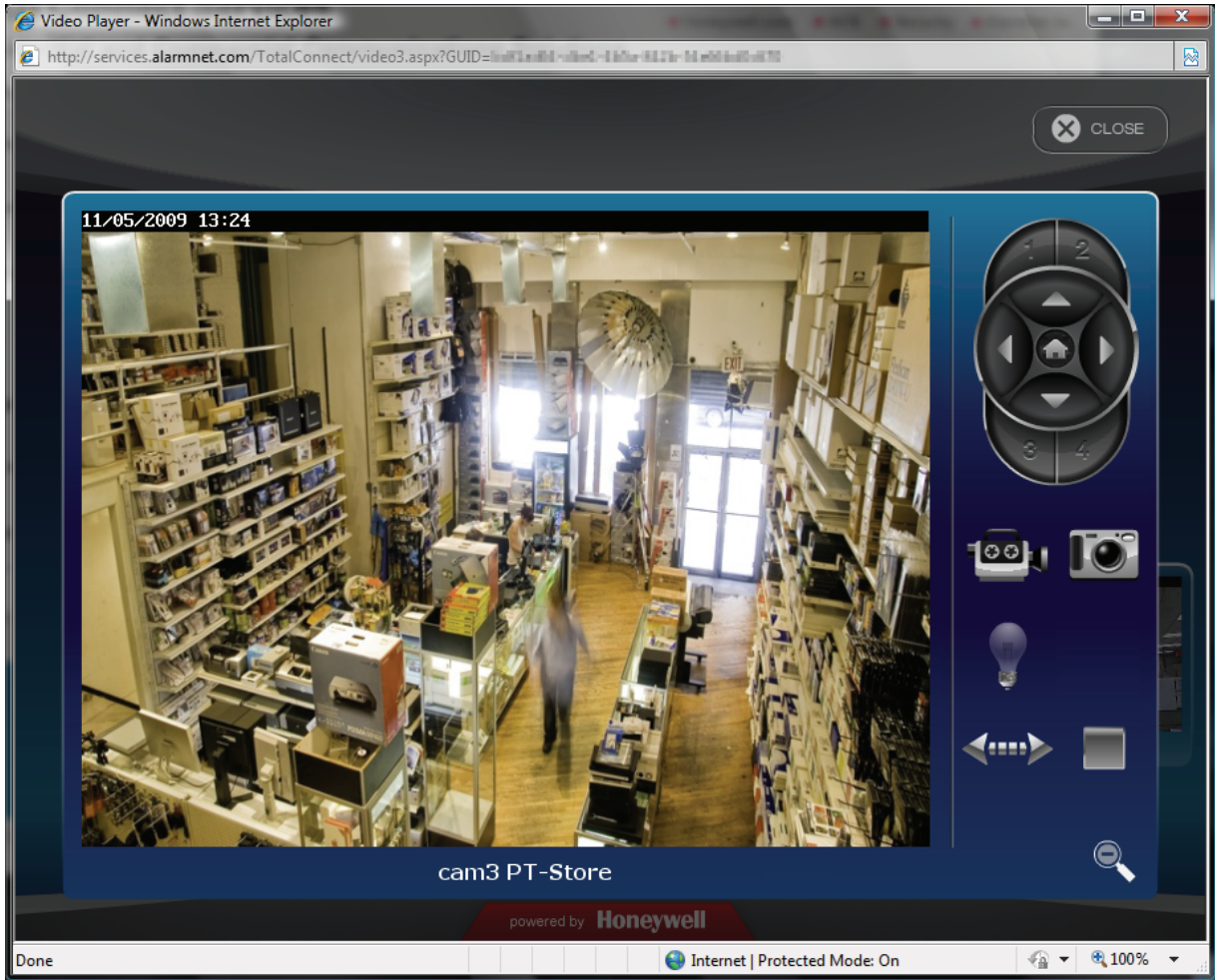
- 4** You may use the arrow buttons to position a PT (pan & tilt) camera. Use single clicks and allow time for the camera to attain the new position. Use the center Home button to command the camera to its home position (refer to the detailed description in the "Tool Buttons" topic).

Use the Enlarge button to bring up a larger dedicated viewing window.









5 This dedicated camera viewing window provides a larger live video view. The tool buttons available will depend on the iP camera model.

For a detailed description of each button's function, refer to the "Tool Buttons" topic that follows.



6 When your session is over, in the video monitoring window click Close then log out of Total Connect.

Tool buttons

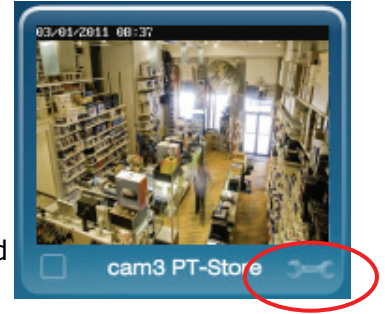
Button	Function
	<p>How the camera's "Home" position is determined.</p> <ul style="list-style-type: none"> • If no video detection areas have been set up, the camera's home position is centered in its vertical and horizontal axis. • If a video detection area has been set up, that view <u>now becomes the home position</u>. • When a camera has been moved to <u>other than the home position</u>, after 5 minutes of no movement the camera will always return to the home position.
	<p>arrow buttons – Click to incrementally position the camera in a vertical or horizontal direction.</p> <p>preset buttons 1, 2, 3, 4 – These buttons are used to quickly drive the camera to a preset watch area. (Up to 4 preset watch areas can be set.) Just "single-click" the button to go to the preset watch area. To set a preset watch area, use the arrow buttons to drive the camera to the desired area. Then press and hold the desired 1, 2, 3, or 4 button for about 3-seconds. A checkmark will briefly appear to confirm the preset is saved.</p> <p>center home button – Click to drive the camera to its home position.</p>
	<p>movie camera – Used to manually capture video clips. When clicked, a <u>10 second video clip</u> is captured, based on the pre-capture and post-capture settings stored in the camera. The video clip will be stored as an event, and may trigger an email notification if desired. (Refer to the "<i>Edit camera settings</i>" topic.) Note, if a scheduled period has been setup for video motion detection, this feature is restricted to the scheduled period. If no schedule has been setup, there is no restriction (operates 24/7).</p>
	<p>still camera – Used to manually capture still pictures. You will be prompted to save the picture if desired.</p>
	<p>light – Used to toggle on or off the camera's auxiliary lighting LEDs. Depending on the ambient low light conditions, the auxiliary LED lighting can improve video quality up to 15 feet.</p>
	<p>auto pan – Causes the camera to swing through its entire horizontal range. At the end of the panning motion, the camera will return to the starting position. After 5 minutes of no movement the camera will always return to the home position.</p>
	<p>stop / play – When clicked, this button toggles between stopping and starting the live video stream. When stopped, the video image is replaced by a blank screen. Note, if you inadvertently click on the live video screen, the video may go blank. You can use this button to restart the live video.</p>

Edit camera settings

Note, that the settings for each camera are configured separately. On each camera preview window there is a Tool icon in the lower right corner, click this icon to bring up the camera's Camera Configuration window.

It is important to know that configuration settings are stored in the camera and are retrieved when a video session is opened.

To understand the various configuration settings we will look at the settings for a typical camera. Refer to the table below and the screen shots that follow to understand how to configure the camera's settings.



Group or Item	Function
Camera Name	You can edit the camera name. Up to 15 characters may be used. The new name will appear when the next video session is initiated.
Display Date and Time	This grouping allows you to set your date and time preferences.
Event Capture Settings	<p>Check the "Motion Detection" box to enable video motion detection. Motion is determined by comparing current and previous video frames.</p> <p>Attachment Type – If you want an email notification, choose between sending a <u>Video Clip</u> or <u>Snapshot</u> attachment. Note, this choice also determines what will be stored in the Event History. If no choice is made, a Video Clip will be stored in the Event History.</p> <p>Pre-Capture and Post Capture Length – These two settings determine the beginning and end of the 10 second period that is captured when motion is detected. For video a 10 second clip is captured, and for snapshots a series of 10 are captured.</p> <p>Interval – Choose from 1 to 15 minutes before the next video motion can be captured. This setting helps reduce excessive notifications.</p>
Event Notification	<p>This grouping enables you to set which Triggers will be used to cause certain actions. Unavailable settings are grayed out.</p> <p><u>Triggers can be from an Input, PIR or Motion.</u> One or more may be selected.</p> <ul style="list-style-type: none"> • Input – Triggered by the security system's control panel. Such a trigger may come from a door opening, safe opening, etc. (<u>This Feature is Reserved for Future Use.</u>) • PIR – Triggered by the camera's PIR sensor. Will trigger on movement in its view. There are no masking, sensitivity levels or adjustments. • Motion – Triggered by video motion. <p><u>A triggered input can cause the following Actions.</u> One or more may be selected.</p> <ul style="list-style-type: none"> • Capture – The video or snap shot is stored in the Event History and can send an email notification if desired. • Output Port – Connector port on the camera can be used to turn on light or sounder, etc. (<u>This Feature is Reserved for Future Use.</u>) • White Light LED – The camera's white light LEDs turn on for the 10 second video motion capture period. <p>Schedule – Opens up a new window to allow setting schedules that define when a motion event can be detected.</p> <p>Detection Areas – Opens a new window to allow setting up to 4 detection areas where the Activity Threshold can be adjusted.</p>
Features	<p>Pan/Tilt Speed – Allows choosing the camera panning speed. Note, a slower speed will give clearer video.</p> <p>Status LED Operation – Uncheck this box to turn off the camera's status LEDs for stealth operation. Although the camera will appear as not operating, all functions are working.</p>
Video Adjustments	This grouping allows the camera to be optimized for the particular viewing area. Note, for cameras that are ceiling mounted, check the Ceiling Mount box to invert the image.

Camera Configuration window

This is where you configure the camera.

Camera Configuration: cam4 WO-Pool

Camera Name:

Display Date and Time:

Time Zone: (GMT-05:00) Eastern Time (US & Canada) ▼

12/24 Hour Format: 12 Hour 24 Hour

Adjust for Daylight Savings: Date/Time Format: MM/DD/YYYY ▼ Timestamp Visible:

Event Capture Settings:

Attachment Type: Video Clip Snapshot(s)

Pre-Capture Length: 1 second ▼

Post-Capture Length: 5 seconds ▼

Interval: 1 minute ▼

Event Notification:

Triggered by: Capture Output Port White Light LED

Input SCHEDULE

PIR DETECTION AREAS

Motion

Video Adjustments:

White Balance: Auto ▼

Brightness: Normal ▼

Sharpness: Normal ▼

Ceiling Mount:

SAVE CANCEL

Upon completion, click the SAVE button. A confirmation message appears.

Schedule window

This window allows you to setup schedules that define when a motion event can be detected. Schedules may be deleted by clicking the "X" adjacent to the schedule.

Edit cam3 PT-Store Schedules

Create Schedule Item

Start Time (hh:mm): 12 : 00 AM ▼

End Time (hh:mm): 12 : 00 AM ▼

Effective Time Frame: Every Day ▼

ADD RESET

Added Schedules

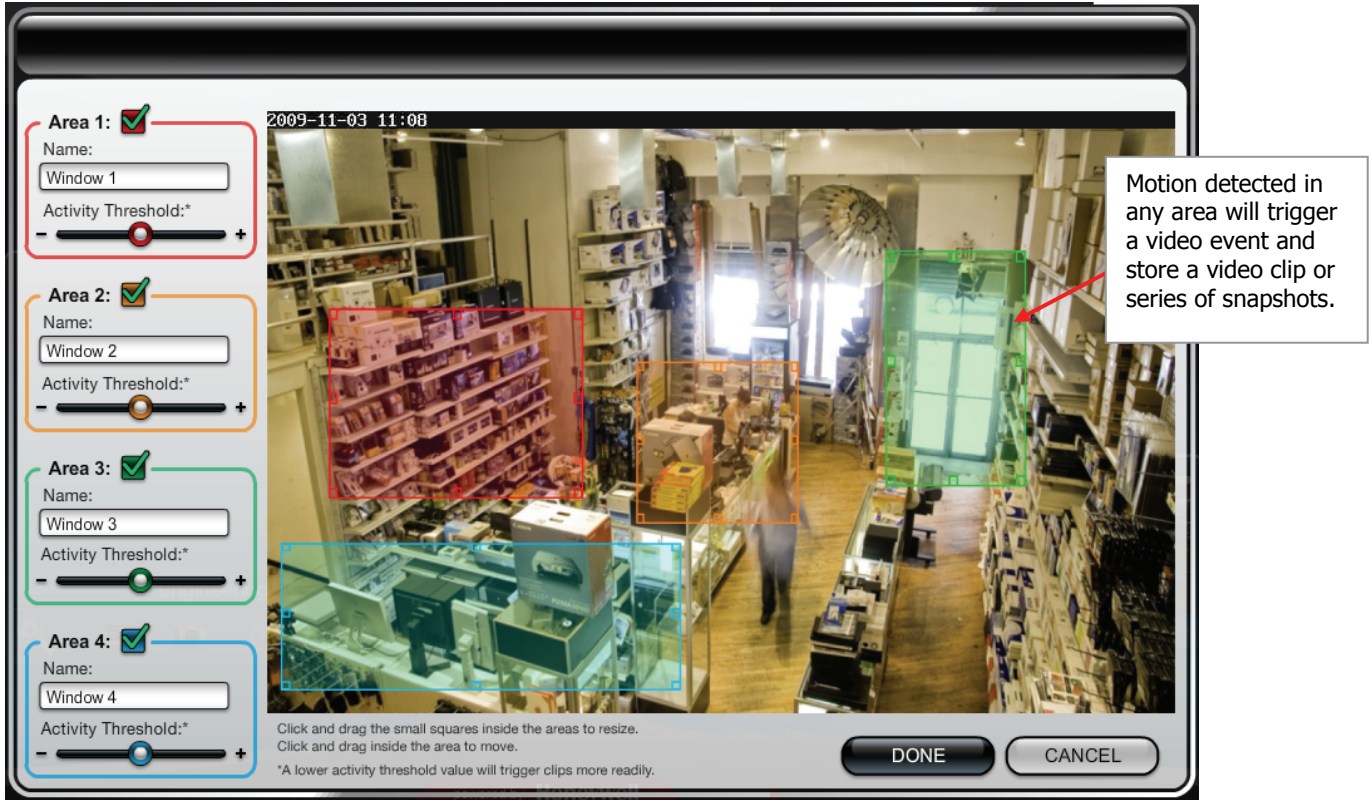
Every Day, 12:00 AM thru 08:00 AM	X
Every Day, 5:00 PM thru 11:55 PM	X

DONE CANCEL

After the camera's schedule is set up, click DONE. You will be returned to the Camera Configuration window.

Detection Areas window

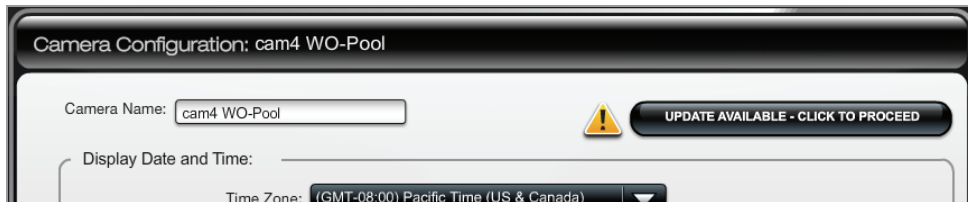
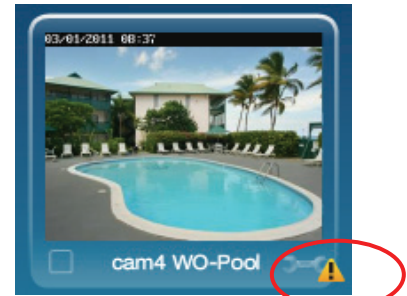
When an area is activated by checking the box, a transparent colored Detection Area will appear on the screen. You can drag and resize the box as desired. Click Done when all the areas are configured.



Updating the Camera Firmware

If your camera is not running the latest firmware an update icon will appear.

1. Click on the Tool icon in the lower right corner. The Camera Configuration window appears.
2. Click the UPDATE AVAILABLE . . . button. Then click OK to the confirmation window to proceed.
3. During the firmware update process the video image will be replaced with a tool image. You can continue using other cameras. When the firmware update completes, normal operation for that camera is restored.



Honeywell

2 Corporate Center Drive, Suite 100

P.O. Box 9040

Melville, NY 11747

Copyright © 2011 Honeywell International Inc.

www.honeywell.com/security



800-08456 3/11 Rev. A